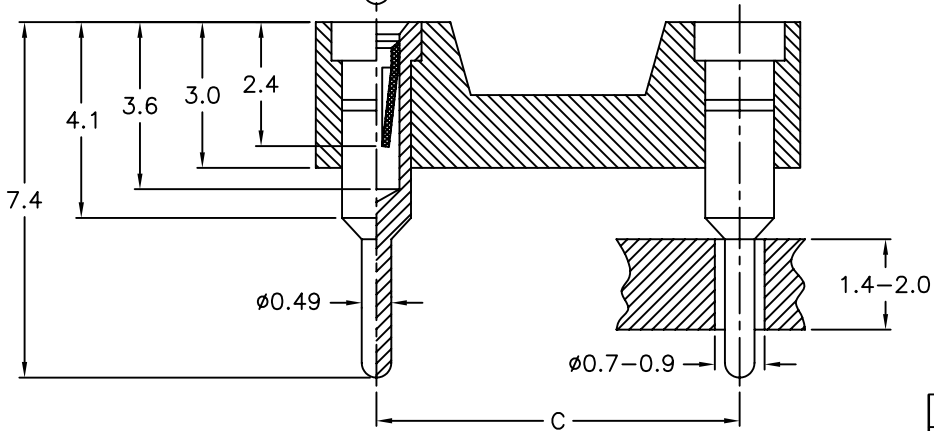
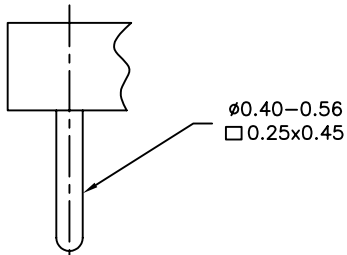
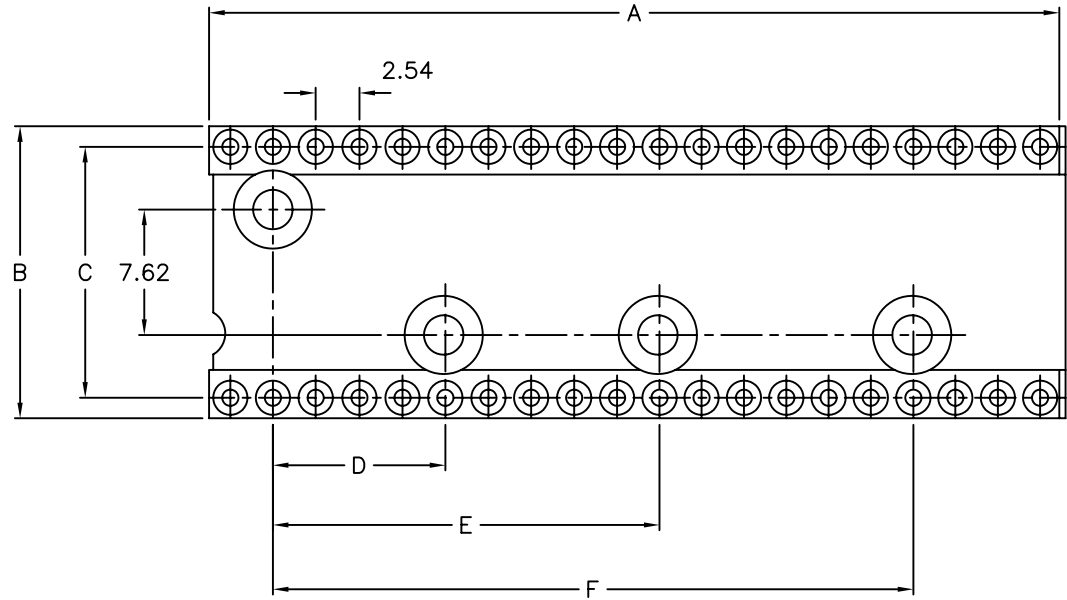


All information on this drawing is proprietary and may not be reproduced in any manner or made available to any unauthorized person/party without written permission of ALPHA PRODUCTS, INC.

REVISIONS			
REV.	DESCRIPTION	DATE	APPROVED

- MARKING:
- BAGGING:
- PACKING:
- LOGO (ALPHA ONLY):
- FULL LOGO:



2. SEE PAGE 2 FOR PART NUMBERS AND DIMENSIONS.  
 1. ALL DIMENSIONS ARE IN MM.

NOTES:

847		
VCN	CCN	AQE
APPLICATION		


ITEM #	QTY REQD	UNIT MEASURE	PART OR IDENTIFYING NO.	NOMENCLATURE OR DESCRIPTION	MATERIAL SPECIFICATION
PARTS LIST					
TOLERANCES (UNLESS OTHERWISE SPECIFIED)			CONTRACT NO.		351 IRVING DR, OXNARD, CA 93030 USA TEL: (805)981-8666 FAX: (805)988-6555 E-MAIL: info@alpha-products.com
MATERIAL			APPROVALS	DATE	
FINISH			DRAWN		
			CHECKED		
			ISSUED		PRECISION IC SOCKET, CLOSED FRAME  SIZE B FSCM NO. 8U759 DWG NO. 300/233C106900-1 REV. 1 OF 2
DO NOT SCALE DRAWING			SCALE NONE		SHEET 1 OF 2

CAD NO. 233C106900g SH REV.

All information on this drawing is proprietary and may not be reproduced in any manner or made available to any unauthorized person/party without written permission of ALPHA PRODUCTS, INC.

REVISIONS			
REV.	DESCRIPTION	DATE	APPROVED

PART NUMBER	# OF POS.	DIM "A"	DIM "B"	DIM "C"	DIM "D"	DIM "E"	DIM "F"	SLEEVE PLATING	CLIP PLATING
300/233C1500008	6	7.60	10.08	7.62				TIN	TIN
300/233C1500009								TIN	GOLD
300/233C1500010								GOLD	GOLD
300/233C1500011	8	10.08	10.08	7.62				TIN	TIN
300/233C1500012								TIN	GOLD
300/233C1500013								GOLD	GOLD
300/233C1069001	14	17.70	10.08	7.62	10.16			TIN	TIN
300/233C1069002								TIN	GOLD
300/233C1069003								GOLD	GOLD
300/233C1069011	16	20.24	10.08	7.62	12.70			TIN	TIN
300/233C1069012								TIN	GOLD
300/233C1069013								GOLD	GOLD
300/233C1069021	18	22.78	10.08	7.62	15.24			TIN	TIN
300/233C1069022								TIN	GOLD
300/233C1069023								GOLD	GOLD
300/233C1069031	20	25.32	10.08	7.62	17.78			TIN	TIN
300/233C1069032								TIN	GOLD
300/233C1069033								GOLD	GOLD
300/233C1069041	24	30.40	10.08	7.62	22.86			TIN	TIN
300/233C1069042								TIN	GOLD
300/233C1069043								GOLD	GOLD
300/233C1069051	24	30.40	17.70	15.24	10.16	22.86		TIN	TIN
300/233C1069052								TIN	GOLD
300/233C1069053								GOLD	GOLD
300/233C1069061	28	35.48	17.70	15.24	10.16	22.86		TIN	TIN
300/233C1069062								TIN	GOLD
300/233C1069063								GOLD	GOLD
300/233C1500014	32	40.56	17.70	15.24	10.16	22.86		TIN	TIN
300/233C1500015								TIN	GOLD
300/233C1500016								GOLD	GOLD
300/233C1069071	40	50.72	17.70	15.24	10.16	22.86	38.10	TIN	TIN
300/233C1069072								TIN	GOLD
300/233C1069073								GOLD	GOLD

ITEM #	QTY REQD	UNIT MEASURE	PART OR IDENTIFYING NO.	NOMENCLATURE OR DESCRIPTION	MATERIAL SPECIFICATION
PARTS LIST					
TOLERANCES (UNLESS OTHERWISE SPECIFIED)				CONTRACT NO.	 351 IRVING DR, OXNARD, CA 93030 USA TEL: (805)981-8666 FAX: (805)988-6555 E-MAIL: info@alpha-products.com
MATERIAL				APPROVALS	
FINISH				DRAWN	
				CHECKED	
				ISSUED	
				SIZE	FSCM NO.
				B	8U759
				DWG NO.	300/233C106900-2
				REV.	
				SCALE	NONE
				SHEET	2 OF 2

847		
VCN	CCN	AQE
APPLICATION		

NOTES:

DO NOT SCALE DRAWING